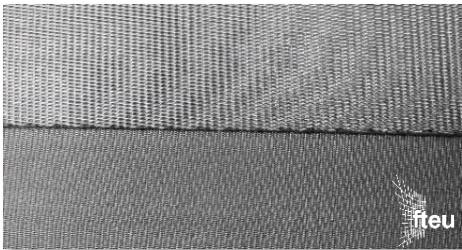
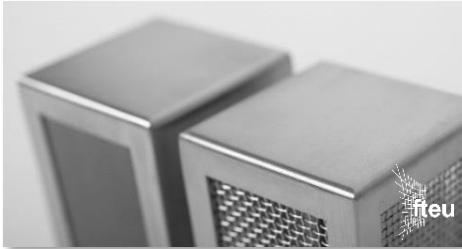


Product presentation

fteu® air filter



Industrial quality through precise filtration solutions of metal mesh

- **Material:** our standard materials are specifications of stainless steel (AISI 304, AISI 316, AISI 316L); other materials, i.e. brass, can be realized
- **Fineness:** customized filtration fineness between 500µm and 1µm for each layer with media of wire mesh or metal fibre felt
- **Manufacturing:** all components are assemble through precise form fit, metallic continuity, or adhesive bond

Filtration efficiency through demand based engineering and design

- **Engineering:** customized design and fluid-based layer configuration for optimal filtration and dispersion
- **Flow:** media of wire mesh (6 different weaving structures available) and/or metal fibre felt for optimized flow and dirt hold characteristics
- **fteu® MircoPleats:** exploitation of filtration surface in defined spaces with fteu® MicroPleats (pleating height 2.3mm – 3.0mm)

Maximized lifetime through reusability of metallic filter elements

- **Backflushing:** design of the filter to withstand pressure in both directions to allow process-integrated backflushing
- **Cleanability:** usage of quality metal components as well as customer-specific assembly methods (welding, bonding, pressing) for efficient cleaning and long-term usability

Contact us today



Available as customized
engineered elements



Available as
series product

Contact us:
fteu® - Technical Sales
verkauf@fteu.de
+49 (0)2452 9760 60

Fluid
Filtration

Fluid
Dispersion

Precision
Assembly

Sound
Absorption

Heat
Absorption

Better Function in Metal Mesh

© filtertechnik.Europe