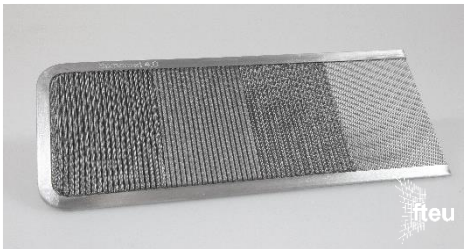
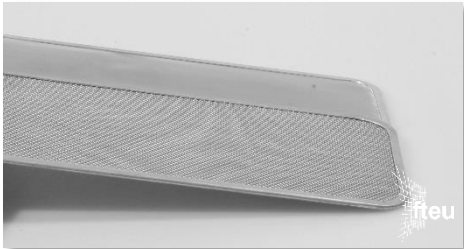


Product presentation

fteu® long screens



Precision through expertise & state-of-the-art technology

- **Types:** various types (welded, framed) available
- **Dimensions:** processes with qualified equipment for the precise manufacturing of long screens with a length of up to 7000mm, framed or spot-welded
- **Material:** stainless steel metal mesh; aluminum frame

Excellence in function

- **Filtration:** defined filtration fineness between 500µm and 1µm for each layer
- **Flow:** media of wire mesh (6 different weaving structures available) and/or metal fibre felt for optimized flow and dirt hold characteristics
- **Fit:** dimensional accuracy for smooth processes
- **Engineering:** customized design and fluid-based layer configuration for optimal filtration and dispersion
- **fteu® MircoPleats:** exploitation of filtration, flow, and pressure parameters with fteu® MicroPleats for up to triple the surface area

Services for speed and customer value

- **Logistics:** safe logistics in fteu®-boxes
- **Fast response:** short delivery time for precision quality (on stock)

Precision
Technology

Contact us today

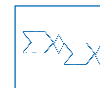
Jenö Inderfurth
Technical Sales
jin@fteu.de
+49 (0)2452 97606 27



Available in standard specs.
(i.e. Reicofil)



Available as customized
engineered elements



Available as
series product

Fluid
Filtration

Fluid
Dispersion

Precision
Assembly

Sound
Absorption

Heat
Absorption

Better Function in Metal Mesh

© filtertechnik.Europe