

Quality Metal Mesh Products

Continuous Filament Processing



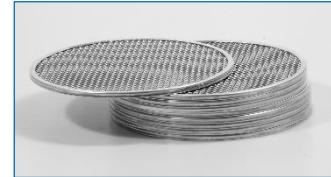
- ISO 9001/TS16949 quality certification
- Supplier for leading extrusion and spinning machine OEMs
- Innovative technology in metal mesh products



- Short lead times & on-time delivery
- Flexible volumes (small quantities possible)
- Standard specifications in stock
- Convenient logistics



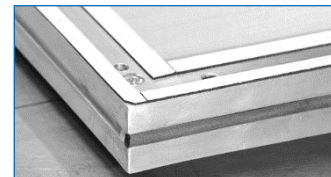
- Dimensions and product configurations according to customer demand
- Optimization of customer filtration and dispersion



Round Screens
filtration in extrusion



Long Screens
filtration and dispersion before spinning



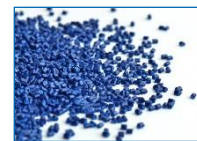
Air Rectifiers
efficient filament processing

About the fteu® Group

We stand for metal mesh products that enable improved function in processes and machines. Quality excellence is our trademark in solutions that achieve more productivity and effectiveness for our customers. Our headquarters are in Germany and further sales and production site in the Czech Republic and P.R. China. Through a global network of agents we are represented worldwide.

Contact us today or learn more: www.fteu.de

Our customers



Plastics



Textile



Nonwovens

Jenö Inderfurth
Technical Sales
jin@fteu.de
+49 (0)2452 97606 27

Fluid
Filtration

Fluid
Dispersion

Precision
Assembly

Sound
Absorption

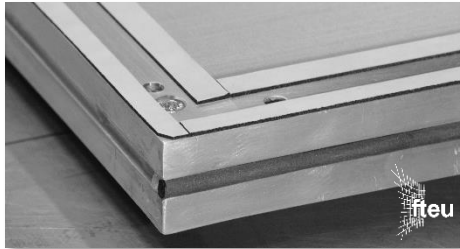
Heat
Absorption

Better Function in Metal Mesh

© filtertechnik.Europe

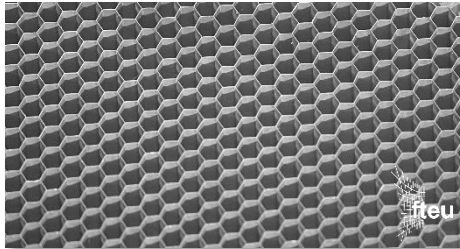
Product presentation

fteu® precision rectifiers



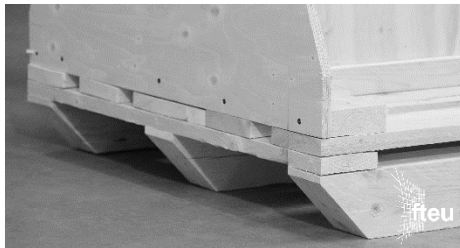
Precision assembly for ideal fit and air flow

- **Dimensions:** Rectifier length of up to 6000mm
- **Material:** Aluminum frames according to customer specifications
- **Precision:** Accuracy of all dimensions and positions across the entire product; flatness of the frame and the wire mesh across the entire product



Precision components for superior customer processes

- **Metal mesh optics:** no optical defects for optimal application characteristics
- **Visual quality honeycombs:** fteu®-visual quality wire mesh of the highest optical grade; fteu®-visual quality honeycombs (height 50mm or 30mm; diameter 9.5mm or 6.4mm) in length of up to 5000mm
- **Industrial quality honeycombs:** Honeycombs (height 50mm or 30mm; diameter 9.5mm or 6.4mm) in industrial quality in length of up to 6000mm



Services for speed and customer value

- **Logistics:** Safe logistics in reusable fteu®-boxes and shock sensors
- **On-site support:** Convenient on-site measurement or measurement protocol for accurate dimensions
- **Engineering:** Engineering and fast batch production for new projects
- **Repair:** Flexible repair service for wire mesh & honeycombs

Contact us today



Available in
standard specifications



Available as customized
engineered elements



Available as
repair service

Jenö Inderfurth
Technical Sales
jin@fteu.de
+49 (0)2452 97606 27

Fluid
Filtration

Fluid
Dispersion

Precision
Assembly

Sound
Absorption

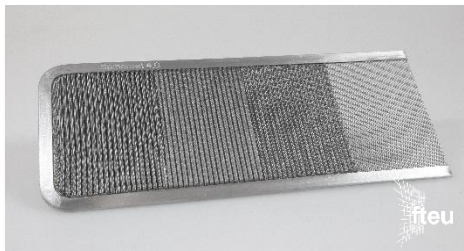
Heat
Absorption

Better Function in Metal Mesh

© filtertechnik.Europe

Product presentation

fteu® long screens



Optimized filtration and dispersion through engineering

- **Engineering:** customized design (framed or spot-welded) and fluid-based layer configuration for optimal filtration and dispersion
- **Fineness:** customized filtration fineness between 500µm and 1µm for each layer
- **Flow:** media of wire mesh (6 different weaving structures available) and/or metal fibre felt for optimized flow and dirt-hold characteristics

Maximized uptime through pleated structures

- **fteu® MircoPleats:** exploitation of filtration surface in defined spaces with fteu® MicroPleats (pleating height 2.3mm – 3.0mm) for up to triple the surface area

Precision through expertise & state-of-the-art technology

- **Dimensions:** processes with qualified equipment for the precise manufacturing of long screens with a length of up to 7000mm

Contact us today



Available in standard specifications



Available as customized engineered elements



Available as series product

Jenö Inderfurth
Technical Sales
jin@fteu.de
+49 (0)2452 97606 27

Fluid
Filtration

Fluid
Dispersion

Precision
Assembly

Sound
Absorption

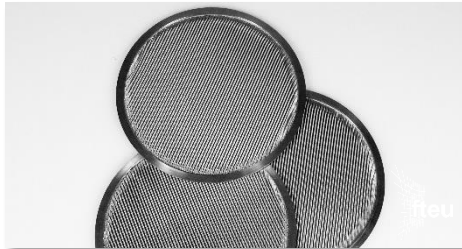
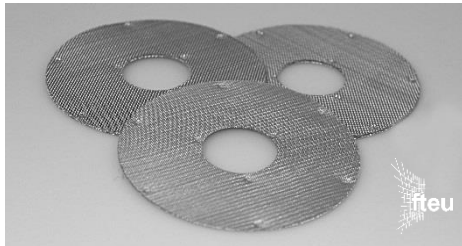
Heat
Absorption

Better Function in Metal Mesh

© filtertechnik.Europe

Product presentation

fteu® precision round screens



Optimized filtration and dispersion

- **Engineering:** customized design (framed or spot-welded) and fluid-based layer configuration for optimal filtration and dispersion
- **Fineness:** customized filtration fineness between 500µm and 1µm for each layer
- **Flow:** media of wire mesh (6 different weaving structures available) and/or metal fibre felt for optimized flow and dirt-hold characteristics

Maximized uptime and lifetime

- **fteu® MircoPleats:** exploitation of filtration surface in defined spaces with fteu® MicroPleats (pleating height 2.3mm – 3.0mm) for up to triple the surface area

Precision fit

- **Shape:** various shapes available with the highest manufacturing accuracy (round-, oval-, ring-shape)
- **Seamless fit:** accuracy of ± 0.07 for a seamless fit, optimized flow characteristics and flow for our customers
- **Technology:** state-of-the-art technology for accurate manufacturing with and without tooling (i.e. plasma cutting)

Contact us today



Available in standard specs.
(i.e. Nordson Kreyenborg)



Available as customized
engineered elements



Available as
series product

Jenö Inderfurth
Technical Sales
jin@fteu.de
+49 (0)2452 97606 27

Fluid
Filtration

Fluid
Dispersion

Precision
Assembly

Sound
Absorption

Heat
Absorption

Better Function in Metal Mesh

© filtertechnik.Europe

Precision overview

fteu® precision round screens



Dimension [mm]	Type	Tolerance [mm]	Procedure	Unit cost	Tool cost
up to Ø120	fteu®-Standard fit	±0,3	Stamping	low	low
			Plasma-cutting	medium	-
	fteu®-Tailor fit	±0,2	Fine stamping	medium	medium
			Fine plasma-cutting	high	low
fteu®-Seamless fit	±0,07	Precision stamping	high	high	
Ø120-Ø300	fteu®-Standard fit	±0,5	Stamping	low	low
			Plasma-cutting	medium	-
	fteu®-Tailor fit	±0,3	Fine stamping	medium	medium
			Fine plasma-cutting	high	low
fteu®-Seamless fit	±0,15	Precision stamping	high	high	
Ø300-Ø500	fteu®-Standard fit	±0,5	Plasma-cutting	low	-
	fteu®-Tailor fit	±0,3	Fine plasma-cutting (max. 400)	medium	low