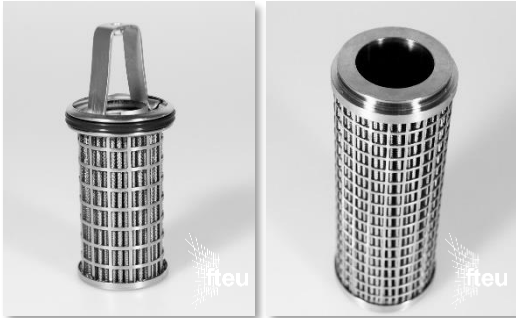


Product presentation

fteu® water filter



Optimized filtration and dispersion through engineering

- **Engineering:** fluid-based layer configuration for optimal filtration and dispersion
- **Fineness:** customized filtration fineness between 500µm and 1µm for each layer
- **Flow:** media of wire mesh (6 different weaving structures available) and/or metal fibre felt for optimized flow and dirt-hold characteristics

Maximized uptime through pleated structures

- **Pleated structures:** realisation of increased filtration surface through pleated structures (max. pleating height of 7mm) for up to 700% surface area compared to flat/cylindrical shape
- **fteu® MicroPleats:** exploitation of filtration surface in defined spaces with fteu® MicroPleats (pleating height 2.3mm – 3.0mm) for up to triple the surface area

Maximized lifetime the quality components and assembly

- **Backflushing:** design of the filter to withstand pressure in both directions to allow process-integrated backflushing
- **Cleanability:** usage of quality metal components as well as customer-specific assembly methods (welding, bonding, pressing) for efficient cleaning and long-term usability

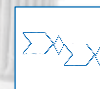
Contact us today



Available in standard specs.
(i.e. Pall, B&K)



Available as customized
engineered elements



Available as
series product

Jenö Inderfurth
Technical Sales
jin@fteu.de
+49 (0)2452 97606 27

Fluid
Filtration

Fluid
Dispersion

Precision
Assembly

Sound
Absorption

Heat
Absorption

Better Function in Metal Mesh

© filtertechnik.Europe